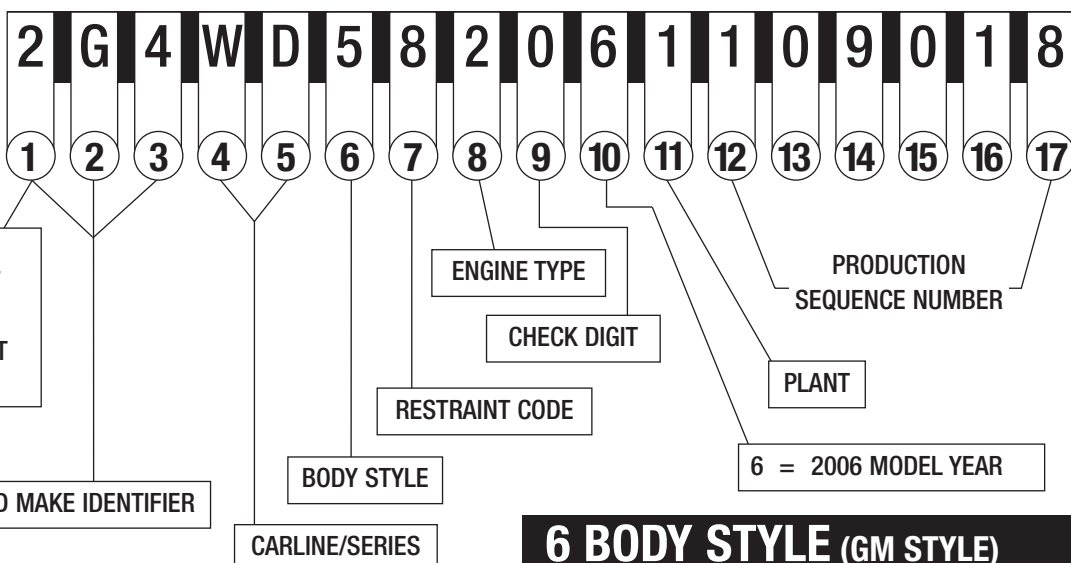




2006 PASSENGER CAR VIN SYSTEM

TYPICAL VIN

POSITION NO.



- 1,5 = U.S. BUILT
- 2 = CANADIAN BUILT
- 3 = MEXICO BUILT
- 6 = AUSTRALIA BUILT
- K = S. KOREA BUILT

1-3 WORLD MAKE IDENTIFIER

- | | |
|--|----------------------------|
| 1 - CHEVROLET 1G1, 2G1, 3G1, KL1 | 6 - CADILLAC 1G6 |
| 2 - PONTIAC 1G2, 2G2, 3G2, 5Y2, 6G2, KL2 | 8 - SATURN 1G8 |
| 4 - BUICK 1G4, 2G4, 3G4 | |

4-5 CARLINE/SERIES

- | | |
|---|---|
| CHEVROLET A/J - COBALT BASE A/K - COBALT LEV 1 – ALL MODELS A/L - COBALT LEV 2 – ALL MODELS A/M - COBALT LEV 3 – ALL MODELS A/P - COBALT LEV 4 – SPORT COUPE SS A/Z - COBALT LEV 2 – LUXURY EDITION J/D - OPTRA J/K - OPTRA LS M/D - MATIZ T/D - AVEO BASE/LS T/G - AVEO LT U/D - U100 V/B - EPICA LS V/D - EPICA LS V/P - EPICA LT W/B - IMPALA LS SEDAN W/C - IMPALA LT SEDAN W/D - IMPALA SS SEDAN W/S - IMPALA POLICE SEDAN W/T - IMPALA LT 3.5 SEDAN W/U - IMPALA LTZ W/J - MONTE CARLO LS COUPE W/K - MONTE CARLO LT COUPE W/L - MONTE CARLO SS COUPE W/M - MONTE CARLO LT 3.5 COUPE W/N - MONTE CARLO LTZ COUPE Y/Y - CORVETTE Z/S - MALIBU LS Z/T - MALIBU LT Z/U - MALIBU LTZ Z/W - MALIBU MAXX SS | Z/M - G6 GTP COUPE/SEDAN/ CONVERTIBLE |
| PONTIAC A/J - PURSUIT BASE (CANADA) A/L - PURSUIT LS (CANADA) A/N - PURSUIT SPORT (CANADA) M/B - SOLTICE CONVERTIBLE S/L - VIBE, FWD S/M - VIBE, AWD S/N - VIBE, GT T/D - WAVE T/W - WAVE LT W/C - GRAND PRIX 367P SEDAN W/P - GRAND PRIX SEDAN W/R - GRAND PRIX GT SEDAN V/X - GTO Z/F - G6 SE SEDAN Z/G - G6 SE1 SEDAN Z/H - G6 GT COUPE/SEDAN/ CONVERTIBLE | BUICK H/D - LUCERNE CXL H/P - LUCERNE CX H/E - LUCERNE CXS H/R - LUCERNE CXL (SPECIAL) W/C - LACROSSE CX W/D - LACROSSE CXL W/E - LACROSSE CXS W/F - ALLURE CX (CANADA ONLY) W/H - ALLURE CXS (CANADA ONLY) W/J - ALLURE CXL (CANADA ONLY) CADILLAC D/C - STS-V8 D/M - CTS D/N - CTS-V D/P - CTS HIGH FEATURE V6 D/R - CTS - RH DRIVE D/W - STS D/X - STS-V K/D - DEVILLE Y/V - XLR ROADSTER Y/X - XLR-V SATURN A/F - ION LEVEL 1 SEDAN MANUAL A/G - ION LEVEL 1 SEDAN AUTO A/H - LEVEL I BASE A/J - ION LEVEL 2 SEDAN AUTO A/K - ION LEVEL 3 SEDAN MANUAL A/L - ION LEVEL 3 SEDAN AUTO A/M - ION LEVEL 2 COUPE MANUAL A/N - ION LEVEL 2 COUPE AUTO A/T - ION RED LINE COUPE A/U - LEVEL II BASE A/V - ION LEVEL 3 COUPE MANUAL A/W - ION LEVEL 3 COUPE AUTO A/X - LEVEL III BASE A/Y - ION - COUPE RED LINE TUNER (HMD) A/Z - ION LEVEL 2 SEDAN MANUAL |

6 BODY STYLE (GM STYLE)

- 1 TWO-DOOR COUPE (27, 37, 47, 57)
- 2 TWO-DOOR (07, 08, 77, 87)
- 3 TWO-DOOR CONVERTIBLE (67)
- 5 FOUR-DOOR SEDAN (19, 69)
- 6 FOUR-DOOR SEDAN (26, 29, 48, 68)
- 7 FOUR-DOOR MPV (06, 46)
- 8 FOUR-DOOR STATION WAGON (35)
- 9 FOUR-DOOR STATION WAGON (75)

7 RESTRAINT CODES

- 1 DRIVER & PASSENGER INFLATABLE RESTRAINT - FRONT
- 2 ACTIVE (MANUAL) BELTS W/DRIVER & PASSENGER INFLATABLE RESTRAINT - FRONT & SIDE
- 3 ACTIVE (MANUAL) BELTS W/DRIVER & PASSENGER INFLATABLE RESTRAINT - FRONT, SIDE & ROOF
- 4 ACTIVE (MANUAL) BELTS W/DRIVER & PASSENGER INFLATABLE RESTRAINT - FRONT & ROOF
- 5 ACTIVE (MANUAL) BELTS W/DRIVER & PASSENGER INFLATABLE RESTRAINT - FRONT W/OCCUPANT SENSOR
- 6 ACTIVE (MANUAL) BELTS W/DRIVER & PASSENGER INFLATABLE RESTRAINT - FRONT AND SIDE & OCCUPANT SENSOR
- 7 ACTIVE (MANUAL) BELTS W/DRIVER & PASSENGER INFLATABLE RESTRAINT - FRONT, SIDE AND ROOF & OCCUPANT SENSOR
- 8 ACTIVE (MANUAL) BELTS W/DRIVER & PASSENGER INFLATABLE RESTRAINT - FRONT AND ROOF & OCCUPANT SENSOR

8 ENGINE TYPE

| CODE | ENG. OPT. | DISP. | CYL. | FUEL* SYSTEM | DIV. USAGE |
|------|-----------|-------|------|--------------|------------|
| A | LH2 | 4.6L | V8 | SFI | 6 |
| B | LE5 | 2.4L | L4 | MFI | 1,2,8 |
| C | LS4 | 5.3L | V8 | SFI | 2 |
| D | LC3 | 4.4L | V8 | MFI | 1,6 |
| E | LS7 | 7.0L | V8 | SFI | 1 |
| F | L61 | 2.2L | L4 | MFI | 1,2,8 |
| J | LG8 | 3.1L | V6 | SFI | 4 |
| K | LZE | 3.5L | V6 | SFI | 1,2 |
| L | LNK | 1.8L | L4 | SFI | 2 |
| L | LBK | 2.5L | L6 | - | 2 |
| M | L95 | 1.4L | L4 | MFI | 1 |
| N | LZ4 | 3.5L | V6 | SFI | 1 |
| P | LSJ | 2.0L | L4 | MFI | 8 |
| R | LZ8 | 3.9L | V6 | MFI | 1 |
| T | LP1 | 2.8L | V6 | SFI | 6 |
| U | LS2 | 6.0L | V8 | SFI | 1,4,6 |
| Y | LD8 | 4.6L | V8 | SFI | 2,4,6 |
| Z | L34 | 2.0L | L4 | MFI | 1,2 |
| 1 | LZ9 | 3.9L | V6 | SFI | 1 |
| 2 | L26 | 3.8L | V6 | SFI | 2,4 |
| 4 | L32 | 3.8L | V6 | SFI | 2 |
| 6 | L91 | 1.6L | L4 | - | 1 |
| 7 | LY7 | 3.6L | V6 | SFI | 6 |
| 8 | LX9 | 3.5L | V6 | SFI | 8 |
| 8 | LV6 | 1.8L | L4 | MFI | 2 |
| 9 | L37 | 4.6L | V6 | SFI | 6 |

*LEGEND
MFI = MULTIPORT FUEL INJECTION
SFI = SEQUENTIAL FUEL INJECTION

11 PLANT

- | | | | | |
|-----------------------|-------------------------|--------------------|----------------------|------------------|
| B - LANSING MI | K - KUNSAN S. KOREA | Y - WILMINGTON DE | 4 - ORION MI | 9 - OSHAWA #1 ON |
| B - BUPYUNG S. KOREA | L - ELIZABETH AUSTRALIA | Z - FREMONT CA | 5 - BOWLING GREEN KY | |
| C - LANSING MI | M - LANSING MI | Z - SPRING HILL TN | 7 - LORDSTOWN OH | |
| C - CHANGWON S. KOREA | S - RAMOS ARIZPE MEXICO | 0 - LANSING MI | 8 - TILLSONBURG ON | |
| F - FAIRFAX II KS | U - HAMTRAMCK MI | 1 - OSHAWA #2 ON | (IPC) | |

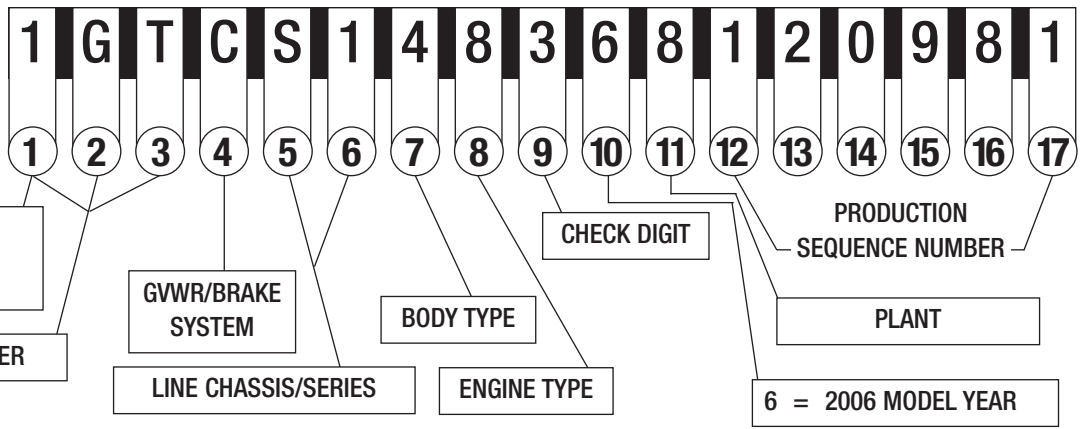
GM

2006 LIGHT DUTY TRUCK, MULTIPURPOSE PASSENGER VEHICLE (MPV) AND INCOMPLETE VEHICLE VIN SYSTEM

TYPICAL VIN

POSITION NO.

1, 4, 5 = U.S. BUILT
2 = CANADIAN BUILT
3 = MEXICO BUILT



1-3 WORLD MAKE IDENTIFIER

CHEVROLET

1GB* 2GB* 3GB*
1GC 2GC 3GC
1GA** 1GN 3GN
2CN

GMC

1GD* 2GD* 3GD*
1GT 2GT 3GT
1GJ** 1GK 3GK

BUICK

3G5 4GL* 5GA

SAAB

5S3

SATURN

4NT* 5GZ

CADILLAC

1GE* 1GY 3GY

PONTIAC

1G5* 1GM 2CK 3G7

ISUZU

1GG* 4NU

HUMMER

5GR 5GT

* Incomplete Vehicle

** Van w/seating exceeding
10 Passengers

4 GVWR/BRAKE SYSTEM

| CODE | GVWR RANGE (IN POUNDS) | BRAKE SYSTEM |
|------|---------------------------|-----------------|
| A | 0 - 3000 | HYD |
| B | 3001 - 4000 | HYD |
| C | 4001 - 5000 | HYD |
| D* | 5001 - 6000 | HYD |
| E** | 6001 - 7000 | HYD |
| F** | 7001 - 8000 | HYD |
| G | 8001 - 9000 | HYD |
| H | 9001 - 10000 | HYD |
| J | 10001 - 14000 | HYD |
| K | 14001 - 16000 | HYD |
| L | 16001 - 19500 | HYD |
| M | 19501 - 26000 | AIR/HYD |

* BUICK & CHEVROLET

COMMERCIAL BODY/CHASSIS

**CADILLAC COMMERCIAL BODY/CHASSIS

5-6 LINE CHASSIS/SERIES

CHEVROLET/GMC*

A/1 HHR LS (1/2 TON)
A/2 HHR LT (1/2 TON)
B/9 INCOMPLETE (CHEVROLET)
C/1 FULL SIZE TRUCK 4x2, 1500 (1/2 TON)
C/2 FULL SIZE TRUCK 4x2, 2500 (3/4 TON)
C/3 FULL SIZE TRUCK 4x2, 3500 (1 TON)
C/5 GMC 3 TON (MEX ONLY)
C/6 FULL SIZE TRUCK 4x2, 1500 (1/2 TON) LUXURY
C/7 FULL SIZE TRUCK 4x2, 2500 (3/4 TON) LUXURY
C/8 FULL SIZE TRUCK 4x2, 3500 (1 TON) LUXURY
K/1 FULL SIZE TRUCK 4x4, 1500 (1/2 TON)
K/2 FULL SIZE TRUCK 4x4, 2500 (3/4 TON)
K/3 FULL SIZE TRUCK 4x4, 3500 (1 TON)
K/5 GMC 3 TON (MEX ONLY)
K/6 FULL SIZE TRUCK 4x4, 1500 (1/2 TON) LUXURY
K/7 FULL SIZE TRUCK 4x4, 2500 (3/4 TON) LUXURY
K/8 FULL SIZE TRUCK 4x4, 3500 (1 TON) LUXURY
G/1 EXPRESS, SAVANA 4x2, 1500 (1/2 TON)
G/2 EXPRESS, SAVANA 4x2, 2500 (3/4 TON)
G/3 EXPRESS, SAVANA 4x2, 3500 (1 TON)
H/1 EXPRESS, SAVANA AWD, 1500 (1/2 TON)
H/2 EXPRESS, SAVANA AWD, 2500 (3/4 TON)
L/1 EQUINOX LS 4x2
L/2 EQUINOX LS 4x4
L/6 EQUINOX LT 4x2
L/7 EQUINOX LT 4x4
S/1 COLORADO, SSR, BLAZER, TRAILBLAZER, TRAILBLAZER (1/2 TON),
CANYON, ENVOY, ENVOY XL 4X2 (1/2 TON), SONOMA
S/6 ENVOY DENALI, DENALI XL 4X2 (1/2 TON)
T/1 COLORADO, SSR, BLAZER, TRAILBLAZER, TRAILBLAZER (1/2 TON), SONOMA,
CANYON Z85 SLE, ENVOY SLE, ENVOY XL SLE 4X4 (1/2 TON)
T/6 ENVOY DENALI, DENALI XL 4X4 (1/2 TON)
U/0 UPLANDER APV 4x2 RWB (1/2 TON) BASE
U/2 UPLANDER LS APV 4x2 RWB (1/2 TON)
U/3 UPLANDER LT APV 4x2 RWB (1/2 TON)
V/0 UPLANDER APV 4x2 EWB (1/2 TON) BASE
V/1 UPLANDER CARGO APV EWB (1/2 TON)
V/2 UPLANDER LS APV EWB (1/2 TON)
V/3 UPLANDER LT APV EWB (1/2 TON)
X/3 UPLANDER AWD LT APV (1/2 TON)
BUICK
A/0 RENDEZVOUS SRV 4x2
B/0 RENDEZVOUS SRV 4x4
B/9 INCOMPLETE
S/1 RAINIER 4x2

T/1 RAINIER 4x4
V/1 TERRAZA EXT MOBILITY INCOMPLETE (1/2 TON)
V/2 TERRAZA EXT EWB-CX (1/2 TON)
V/3 TERRAZA EXT CXL (1/2 TON)
X/2 TERRAZA AWD EXT CX (1/2 TON)
X/3 TERRAZA AWD EXT CXL (1/2 TON)
CADILLAC
C/6 ESCALADE, 4x2 1500 (1/2 TON) LUXURY
E/6 SRX
K/4 ESCALADE, ESCALADE ESV, ESCALADE EXT PLATINUM EDITIONS (1/2 TON)
LUXURY
K/6 ESCALADE, ESCALADE ESV, ESCALADE EXT 4x4 1500 (1/2 TON) LUXURY
K/0 INCOMPLETE (DTS HEARSE)
K/9 INCOMPLETE (DTS LIMOUSINE)
PONTIAC
L/6 TORRENT FWD (1/2 TON)
L/7 TORRENT AWD (1/2 TON)
U/0 MONTANA SV6 RWB 4x2 (1/2 TON) BASE (US/CANADA & SAU1/MEXICO 1SB)
U/2 MONTANA SV6 RWB 4x2 (1/2 TON) (US/CANADA & SAU2/MEXICO 1SC)
U/3 MONTANA SV6 RWB 4x2 (1/2 TON) (US/CANADA & SAU3/MEXICO 1SE)
V/0 MONTANA SV6 EWB 4x2 (1/2 TON) BASE 1SA (MEXICO 1SB)
V/1 MONTANA SV6 EWB MOBILITY INCOMPLETE (1/2 TON)
V/2 MONTANA SV6 EWB (1/2 TON) (US/CANADA 1SB, MEXICO 1SC)
V/3 MONTANA SV6 EWB (1/2 TON) (1SB DOMESTIC)
V/3 MONTANA SV6 EWB (US/CANADA 1SB, MEXICO 1SC)
X/2 MONTANA SV6 AWD (1/2 TON) (US)
X/3 MONTANA SV6 AWD (1/2 TON) (CANADA 1SC)
SATURN
V/0 RELAY EXT & RF2 4/2 (1/2 TON)
V/1 RELAY EXT MOBILITY INCOMPLETE (1/2 TON)
V/2 RELAY EXT & RF3 (1/2 TON)
X/2 RELAY AWD & RF3 (1/2 TON)
Z/2 VUE FWD MANUAL
Z/3 VUE FWD AUTO
Z/4 VUE AWD 4 CYL.
Z/5 VUE FWD 6 CYL.
Z/6 VUE AWD 6 CYL.
HUMMER
N/1 MID SIZE 4x4 SUV (1/2 TON) H3
N/2 FULL SIZE 4x4 SUV/SUT, (3/4 TON) H2
ISUZU
S/1 ASCENDER 4x2 (1/2 TON)
T/1 ASCENDER 4x4 (1/2 TON)
SAAB
T/1 SAAB, 9-7, SUV

* LINE/CHASSIS DESCRIPTION INCLUDES ALL FULL SIZE CHEVROLET AND GMC TRUCK MODELS

7 BODY TYPE

- 0 – COMMERCIAL CHASSIS
(CHEVROLET/BUICK/CADILLAC)
- 1 – COMMERCIAL SPECIAL AND RV CUTAWAY
(INCLUDES CHEVROLET EXPRESS COMMERCIAL, GMC SAVANA CARGO SPECIAL AND CAMPER SPECIAL)
- 2 – SPORT UTILITY TRUCK
(AVALANCHE, ESCALADE EXT, ESCALADE EXT PLATINUM, H2 SUT)
- 3 – FOUR-DOOR CAB/UTILITY
(INCLUDES TRAILBLAZER, RAINIER, ENVOY, ENVOY XL, EQUINOX FULL SIZE – YUKON, TAHOE, DENALI ESCALADE, ESCALADE PLATINUM, H2 AND CREW CAB)
- 3 – FOUR-DOOR ALL PURPOSE VEHICLE
(MONTANA, UPLANDER, TERRAZA, RELAY), RENDEZVOUS (SRV), SATURN SUV, SRX, HHR
- 4. – TWO-DOOR CAB
(COLORADO, SSR, CANYON, SIERRA, SILVERADO)
- 5 – VAN
(EXPRESS, SAVANA)
- 6 – SUBURBAN, YUKON XL, ENVOY XL, DENALI XL, TRAILBLAZER EXT, ASCENDER, ESCALADE ESV, ESCALADE ESV PLATINUM
- 7 – MOTOR HOME CHASSIS
- 8 – TWO-DOOR UTILITY
(BLAZER)
- 9 – EXTENDED CAB/EXTENDED VAN
(COLORADO, CANYON, SIERRA, SILVERADO, EXPRESS AND SAVANA)

8 ENGINE TYPE

| CODE | ENG. OPT. | DISP. | CYL. | FUEL SYSTEM** |
|------|-----------|-------|------|---------------|
| A | LH2 | 4.6L | V8 | SFI |
| B | L33 | 5.3L | V8 | SFI |
| D | L61 | 2.2L | L4 | MFI |
| D | LBZ | 6.6T | V8 | DSL |
| E | LD9 | 2.4L | L4 | MFI |
| F | LNJ | 3.4L | V6 | SFI |
| G | L18 | 8.1L | V8 | MFI |
| H | LS2 | 6.0L | V8 | SFI |
| L | LX9 | 3.5L | V6 | SFI |
| M | LH6 | 5.3L | V8 | SFI |
| N | LQ9 | 6.0L | V8 | MFI |
| P | LE5 | 2.4L | L4 | MFI |
| R | L31 | 5.7L | V8 | CPI |
| S | LL8 | 4.2L | L6 | MFI |
| T | LM7 | 5.3L | V8 | MFI |
| U | LQ4 | 6.0L | V8 | MFI |
| V | LR4 | 4.8L | V8 | MFI |
| W | LMN | 2.0L | L4 | CPI |
| X | LU3 | 4.3L | V6 | MFI |
| Y* | LD8 | 4.6L | V8 | MFI |
| Z | L59 | 5.3L | V8 | MFI |
| 1 | LZ9 | 3.9L | V6 | SFI |
| 2 | LLY | 6.6T | V8 | DSL |
| 4 | L66 | 3.5L | V6 | MFI |
| 5 | LLW | 2.0T | L4 | CPI |
| 6 | L52 | 3.5L | L5 | MFI |
| 7 | LY7 | 3.6L | V6 | SFI |
| 8 | LK5 | 2.8L | L4 | MFI |
| 9 | LM8 | 3.2L | V6 | MFI |
| 9* | L37 | 4.6L | V8 | MFI |

* USED ONLY IN BUICK, CHEVROLET & CADILLAC PASSENGER CAR – DERIVED INCOMPLETE VEHICLES

** DSL = DIESEL, MFI = MULTIPOINT FUEL INJECTION. CPI = CENTRAL PORT INJECTION, T = TURBO SFI = SEQUENTIAL FUEL INJECTION



2006 MEDIUM DUTY TRUCK AND INCOMPLETE VEHICLE VIN SYSTEM

TYPICAL VIN

POSITION NO.

1, 4 = U.S. BUILT
2 = CANADIAN BUILT
J = JAPAN BUILT

WORLD MAKE IDENTIFIER

SERIES

GVWR/BRAKE SYSTEM

TRUCK LINE & CAB TYPE

CHASSIS TYPE

CHECK DIGIT

ENGINE TYPE

PRODUCTION SEQUENCE NUMBER

PLANT

6 = 2006 MODEL YEAR

1-3 WORLD MAKE IDENTIFIER

-CHEVROLET

1GC 2GC
1GB* 2GB*
4KB* J8B*

-GMC

1GT 2GT
1GD* 2GD*
4KD* J8D*

-ISUZU

4GT* 4KL JAL
* Incomplete Vehicle

5 SERIES

- 4 – 4500 SERIES (C4/W4)
- 5 – 5500 SERIES (C5/W5)
- 6 – 6500 SERIES (C6(H6*)/T6F)
- 7 – 7500 SERIES (B7/C7(H7*)/D7/T7F/W7)
- 8 – 8500 SERIES (C8(H8*)/T8F)

* H6, H7, H8 ARE IDENTIFIERS FOR C6, C7, C8 MODELS W/ISUZU NAMEPLATE CONVERSION OPTION Z89.

6 TRUCK LINE & CAB TYPE (MODEL)

- A – FORWARD/TILTMMASTER MEDIUM, TILT, 72.0 BBC (W5)
- B – FORWARD/TILTMMASTER MEDIUM, TILT, 67.0 BBC (W4)
- E – C SERIES (H SERIES), CREW CAB (C4E – C8E)
- C – C SERIES (H SERIES), CONVENTIONAL CAB (C4C – C8C)
- V – C SERIES (H SERIES), CUTAWAY COMMERCIAL CAB (C4V – C8V)
- U – C SERIES (H SERIES), CUTAWAY MOTORHOME (C4U/C5U)
- J – W SERIES NPR/NPQ NON-TILT CAB, 108.0 BBC (W4/W5)
- F – T SERIES TILT CAB, 86.0 BBC (T6F – T8F)

BBC = BUMPER TO BACK OF CAB

4 GVWR/BRAKE SYSTEM

| CODE | GVWR RANGE (IN POUNDS) | BRAKE SYST. |
|------|---------------------------|-------------|
| A | 9001 - 10,000 | HYD |
| B | 10,001 - 14,000 | HYD |
| C | 14,001 - 16,000 | HYD |
| D | 14,001 - 16,000 | AIR |
| E | 16,001 - 19,500 | HYD |
| F | 16,001 - 19,500 | AIR |
| G | 19,501 - 23,500 | HYD |
| H | 19,501 - 23,500 | AIR |
| J | 23,501 - 26,000 | HYD |
| K | 23,501 - 26,000 | AIR |
| L | 26,001 - 33,000 | HYD |
| M | 26,001 - 33,000 | AIR |
| N | 33,001 - 40,500 | HYD |
| P | 33,001 - 40,500 | AIR |
| R | 40,501 - 48,500 | HYD |
| S | 40,501 - 48,500 | AIR |
| T | 48,501 - 58,000 | AIR |
| V | 58,001 - 69,500 | AIR |
| X | GLIDER KIT | — |

7 CHASSIS TYPE

- 0 – GLIDER KIT
- 1 – 4 X 2 (2 AXLES - 1 DRIVING)
- 3 – 4 X 4 (2 AXLES - 2 DRIVING)
- 4 – 6 X 4 (3 AXLES - 2 DRIVING)

8 ENGINE TYPE

- C – CAT 7.2L L6 TURBO ELECTRONIC (LG5)
- G – GM 8.1L V8 MFI GASOLINE (L18)
- X – GLIDER KIT LESS ENGINE
- 2 – 6.6L V8 DI TURBO DIESEL, DURAMAX (LLY)
- 3 – 7.8L L6 DI TURBO DIESEL, I/C, DURAMAX (LG4)
- 4* – ISUZU 4.75L L4 4HE1-XS I/C TURBO DIESEL (1C3)
- 5* – ISUZU 4.75L L4 4HE1-XN I/C TURBO DIESEL (1C2)
- 6* – ISUZU 5.2L L4 I/C TURBO DIESEL (1L5)

* CODES 4, 5 AND 6 ARE FOR ISUZU/GM ENGINES USED BY ISUZU/GM ORDERED VEHICLES BUILT BY ISUZU

11 PLANT

| | | | | | |
|----------------|--------|------------------|--------|-------------------|-------|
| B - BALTIMORE | MD | L - LANSING | MI | 1 - WENTZVILLE | MO |
| B - LANSING | MI | M - TOLUCA | MEXICO | 2 - MORAINÉ | OH |
| D - DORAVILLE | GA | R - ARLINGTON | TX | 3 - KAWASAKI | JAPAN |
| E - PONTIAC | MI | S - RAMOS ARIZPE | MEXICO | 6 - INGERSOLL | ON |
| F - FLINT | MI | S - SPRINGHILL | TN | 6 - OKLAHOMA CITY | OK |
| G - SILAO | MEXICO | T - SHREVEPORT | LA | 7 - FUJISAWA | JAPAN |
| H - MISHAWAKA | IN | Z - FORT WAYNE | IN | 8 - SHREVEPORT | LA |
| J - JANESVILLE | WI | 0 - LANSING | MI | 8 - TILLSONBURG | ON |
| K - LINDEN | NJ | 1 - OSHAWA | ON | (IPC) | |

The information shown is correct at time of printing, but may be changed during model year.

To obtain additional copies, please fax request to 586-492-0292

General Motors Corporation, Service Operations, 30501 Van Dyke, Warren, MI 48090
Litho in U.S.A. 9/05

©2005 General Motors Corporation. All Rights Reserved.