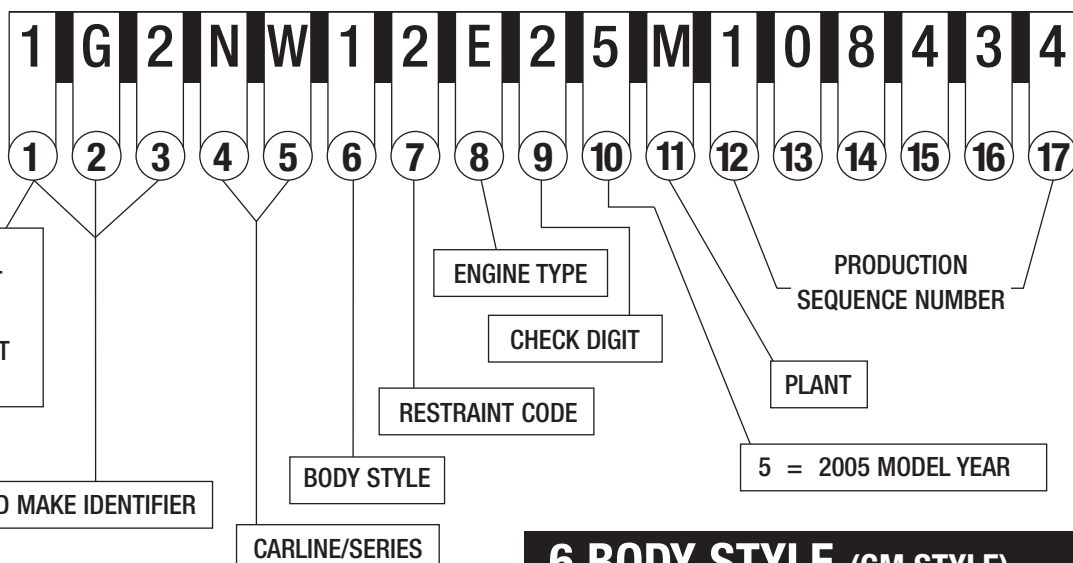


GM

2005 PASSENGER CAR VIN SYSTEM

TYPICAL VIN

POSITION NO.



- 1,5 = U.S. BUILT
- 2 = CANADIAN BUILT
- 3 = MEXICO BUILT
- 6 = AUSTRALIA BUILT
- K = S. KOREA BUILT

WORLD MAKE IDENTIFIER

BODY STYLE

CARLINE/SERIES

ENGINE TYPE

CHECK DIGIT

RESTRAINT CODE

PLANT

PRODUCTION SEQUENCE NUMBER

5 = 2005 MODEL YEAR

1-3 WORLD MAKE IDENTIFIER

- | | |
|--|----------------------------|
| 1 - CHEVROLET
1G1, 2G1, 3G1, KL1 | 6 - CADILLAC
1G6 |
| 2 - PONTIAC
1G2, 2G2, 3G2, 5Y2, 6G2, KL2 | 8 - SATURN
1G8 |
| 4 - BUICK
1G4, 2G4, 3G4 | |

6 BODY STYLE (GM STYLE)

- 1 TWO-DOOR COUPE (27, 37, 47, 57)
- 2 TWO-DOOR (07, 08, 77, 87)
- 3 TWO-DOOR CONVERTIBLE (67)
- 5 FOUR-DOOR SEDAN (19, 69)
- 6 FOUR-DOOR SEDAN (26, 29, 48, 68)
- 8 FOUR-DOOR STATION WAGON (35)
- 9 FOUR-DOOR STATION WAGON (75)

4-5 CARLINE/SERIES

CHEVROLET

- A/J - COBALT BASE
- A/K - COBALT LEV 1 – ALL MODELS
- A/L - COBALT LEV 2 – ALL MODELS
- A/M - COBALT LEV 3 – ALL MODELS
- A/N - COBALT SPORT SEDAN
- A/P - COBALT LEV 4 – SPORT COUPE
- A/Z - COBALT LEV 2 – LUXURY EDITION
- J/C - CAVALIER BASE
- J/F - CAVALIER LEV 1
- J/H - CAVALIER Z24
- J/D - OPTRA BASE
- J/K - OPTRA LS
- N/D - CLASSIC
- M/D - MATIZ
- T/D - AVEO BASE/LS
- T/G - AVEO LT
- U/D - U100
- V/D - EPICA
- V/B - EPICA LS
- V/P - EPICA LT
- W/F - IMPALA
- W/H - IMPALA LS
- W/P - IMPALA SS
- W/W - MONTE CARLO LS
- W/X - MONTE CARLO LT
- W/Z - MONTE CARLO HI-SPORT SS
- Y/Y - CORVETTE
- Z/S - MALIBU
- Z/T - MALIBU LS
- Z/U - MALIBU LT

BUICK

- C/U - PARK AVENUE-ULTRA
- C/W - PARK AVENUE
- H/P - LE SABRE CUSTOM
- H/R - LE SABRE LIMITED
- W/C - LACROSSE CX
- W/D - LACROSSE CXL
- W/E - LACROSSE CXS
- W/F - ALLURE CX
- W/H - ALLURE CXS
- W/J - ALLURE CXL
- W/S - CENTURY CUSTOM

CADILLAC

- D/C - STS-V8
- D/M - CTS
- D/N - CTS-V
- D/P - CTS HIGH FEATURE V6
- D/R - CTS - RH DRIVE
- D/W - STS
- K/D - DEVILLE
- K/E - DEVILLE LUXURY (DHS)
- K/F - DEVILLE TOURING (DTS)
- Y/V - XLR ROADSTER

SATURN

- A/F - ION LEVEL 1 SEDAN MANUAL
- A/G - ION LEVEL 1 SEDAN AUTO
- A/H - LEVEL I BASE
- A/J - ION LEVEL 2 SEDAN AUTO
- A/K - ION LEVEL 3 SEDAN MANUAL
- A/L - ION LEVEL 3 SEDAN AUTO
- A/M - ION LEVEL 2 COUPE MANUAL
- A/N - ION LEVEL 2 COUPE AUTO
- A/T - ION RED LINE COUPE
- A/U - LEVEL II BASE
- A/V - ION LEVEL 3 COUPE MANUAL
- A/W - ION LEVEL 3 COUPE AUTO
- A/X - LEVEL III BASE
- A/Y - ION - COUPE RED LINE TUNER (HMD)
- A/Z - ION LEVEL 2 SEDAN MANUAL
- J/C - L300 BASE
- J/D - L300 MID LEVEL
- J/L - L300 UP LEVEL

PONTIAC

- A/J - PURSUIT BASE (CANADA)
- A/L - PURSUIT LS (CANADA)
- A/N - PURSUIT SPORT (CANADA)
- H/X - BONNEVILLE SE
- H/Y - BONNEVILLE SLE
- H/Z - BONNEVILLE GXP
- J/B - SUNFIRE
- N/E - GRAND AM SE
- N/V - GRAND AM GT1
- N/W - GRAND AM GT
- S/L - VIBE
- S/M - VIBE, AWD
- S/N - VIBE, GT
- T/D - WAVE
- T/W - WAVE LT
- W/C - GRAND PRIX GXP
- W/P - GRAND PRIX
- W/R - GRAND PRIX GTP
- W/S - GRAND PRIX GT
- V/X - GTO
- Z/G - G6 SE1
- Z/H - G6 GT

7 RESTRAINT CODES

- 1 ACTIVE (MANUAL) BELTS
- 2 ACTIVE (MANUAL) BELTS W/DRIVER & PASSENGER INFLATABLE RESTRAINT SYSTEM (FRONTAL)
- 3 ACTIVE (MANUAL) BELTS W/DRIVER & PASSENGER INFLATABLE RESTRAINT (FRONTAL). AUTOMATIC OCCUPANT SENSOR (PASSENGER)
- 4 ACTIVE (MANUAL) BELTS W/DRIVER & PASSENGER INFLATABLE RESTRAINT SYSTEM (FRONTAL & SIDE)
- 5 ACTIVE (MANUAL) BELTS W/FRONTAL INFLATABLE RESTRAINTS - DRIVER & PASSENGER AND SIDE INFLATABLE RESTRAINT - DRIVER SIDE
- 6 ACTIVE (MANUAL) BELTS W/DRIVER & PASSENGER INFLATABLE RESTRAINTS (FRONTAL & SIDE). AUTOMATIC OCCUPANT SENSOR (PASSENGER)
- 7 ACTIVE (MANUAL) BELTS W/DRIVER & PASSENGER INFLATABLE RESTRAINTS (FRONTAL & SIDE). REAR PASSENGER INFLATABLE RESTRAINTS (SIDE)

8 ENGINE TYPE

CODE	ENG. OPT.	DISP.	CYL.	FUEL* SYSTEM	DIV. USAGE
A	LH2	4.6L	V8	SFI	6
B	LE5	2.4L	L4	MFI	1,2
C	LS4	5.3L	V8	SFI	2
C	LW9	3.0L	V6	SFI	4
E	LA1	3.4L	V6	SFI	1,2
F	L61	2.2L	L4	MFI	1,2,8
G	LS1	5.7L	V8	SFI	2
J	LG8	3.1L	V6	SFI	4
K	L36	3.8L	V6	SFI	1,2,4
L	LNK	1.8L	L4	SFI	2
L	LBK	2.5L	L6	-	1
M	L95	1.4L	L4	MFI	1
N	LO1	1.6L	L4	MFI	2
N	LA3	3.2L	V6	MFI	6
P	LSJ	2.0L	L4	MFI	8
R	L81	3.0L	V6	MFI	8
S	LS6	5.7L	V8	SFI	1
T	LD9	2.4L	L4	SFI	4
T	LP1	2.8L	V6	SFI	6
U	LS2	6.0L	V8	SFI	1,2
Y	LD8	4.6L	V8	SFI	6
1	L67	3.8L	V6	SFI	1,4
2	L26	3.8L	V6	SFI	2
4	L32	3.8L	V6	SFI	2
6	L91	1.6L	L4	-	1
7	LY7	3.6L	V6	SFI	6
8	LX9	3.5L	V6	SFI	1
8	LV6	1.8L	L4	MFI	2
9	L37	4.6L	V8	SFI	6

*LEGEND

MFI = MULTIPORT FUEL INJECTION
SFI = SEQUENTIAL FUEL INJECTION

11 PLANT

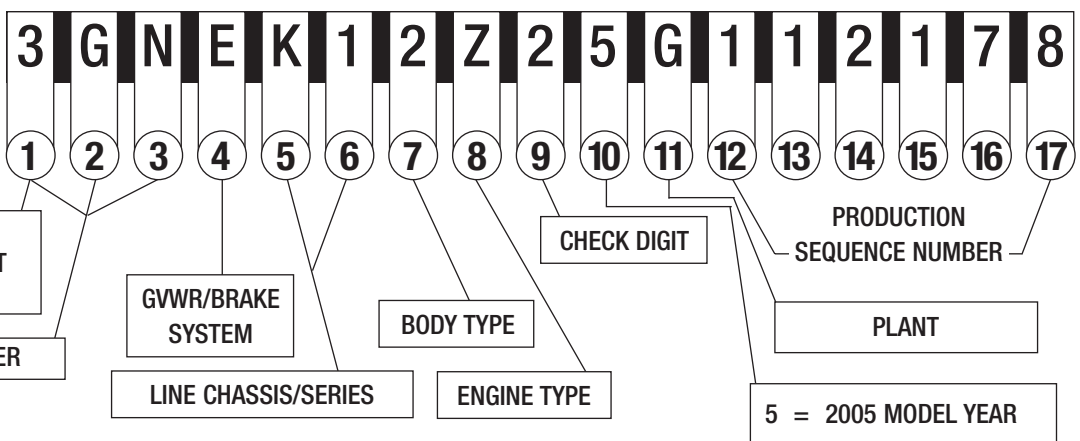
B - LANSING MI	K - KUNSAN S. KOREA	Y - WILMINGTON DE	4 - ORION MI	9 - OSHAWA #1 ON
B - BUPYUNG S. KOREA	L - ELIZABETH AUSTRALIA	Z - FREMONT CA	5 - BOWLING GREEN KY	
C - LANSING MI	M - LANSING MI	Z - SPRING HILL TN	7 - LORDSTOWN OH	
C - CHANGWON S. KOREA	S - RAMOS ARIZPE MEXICO	0 - LANSING MI	8 - TILLSONBURG ON	
F - FAIRFAX II KS	U - HAMTRAMCK MI	1 - OSHAWA #2 ON	(IPC)	

GM

2005 LIGHT DUTY TRUCK, MULTIPURPOSE PASSENGER VEHICLE (MPV) AND INCOMPLETE VEHICLE VIN SYSTEM

TYPICAL VIN

POSITION NO.



1-3 WORLD MAKE IDENTIFIER

CHEVROLET

1GB* 2GB* 3GB*
1GC 2GC 3GC
1GA** 1GN 3GN
2CN

GMC

1GD* 2GD* 3GD*
1GT 2GT 3GT
1GJ** 1GK 3GK

BUICK

3G5 4GL* 5GA

SAAB

5S3

SATURN

4NT* 5GZ

CADILLAC

1GE* 1GY 3GY

PONTIAC

1G5* 1GM 3G7

ISUZU

1GG* 4NU

HUMMER

5GR

* Incomplete Vehicle

** Van w/seating exceeding
10 Passengers

4 GVWR/BRAKE SYSTEM

CODE	GVWR RANGE (IN POUNDS)	BRAKE SYSTEM
A	0 - 3000	HYD
B	3001 - 4000	HYD
C	4001 - 5000	HYD
D*	5001 - 6000	HYD
E**	6001 - 7000	HYD
F**	7001 - 8000	HYD
G	8001 - 9000	HYD
H	9001 - 10000	HYD
J	10001 - 14000	HYD
K	14001 - 16000	HYD
L	16001 - 19500	HYD
M	19501 - 26000	AIR/HYD

* BUICK & CHEVROLET

COMMERCIAL BODY/CHASSIS

**CADILLAC COMMERCIAL BODY/CHASSIS

5-6 LINE CHASSIS/SERIES

CHEVROLET/GMC*

B/9 INCOMPLETE (CHEVROLET)
C/1 FULL SIZE TRUCK 4x2, 1500 (1/2 TON)
C/2 FULL SIZE TRUCK 4x2, 2500 (3/4 TON)
C/3 FULL SIZE TRUCK 4x2, 3500 (1 TON)
C/5 GMC 3 TON (MEX ONLY)
C/6 FULL SIZE TRUCK 4x2, 1500 (1/2 TON) LUXURY
C/7 FULL SIZE TRUCK 4x2, 2500 (3/4 TON) LUXURY
C/8 FULL SIZE TRUCK 4x2, 3500 (1 TON) LUXURY
K/1 FULL SIZE TRUCK 4x4, 1500 (1/2 TON)
K/2 FULL SIZE TRUCK 4x4, 2500 (3/4 TON)
K/3 FULL SIZE TRUCK 4x4, 3500 (1 TON)
K/5 GMC 3 TON (MEX ONLY)
K/6 FULL SIZE TRUCK 4x4, 1500 (1/2 TON) LUXURY
K/7 FULL SIZE TRUCK 4x4, 2500 (3/4 TON) LUXURY
K/8 FULL SIZE TRUCK 4x4, 3500 (1 TON) LUXURY
G/1 EXPRESS, SAVANA 4x2, 1500 (1/2 TON)
G/2 EXPRESS, SAVANA 4x2, 2500 (3/4 TON)
G/3 EXPRESS, SAVANA 4x2, 3500 (1 TON)
H/1 EXPRESS, SAVANA AWD, 1500 (1/2 TON)
H/2 EXPRESS, SAVANA AWD, 2500 (3/4 TON)
M/1 ASTRO, SAFARI VAN 4x2 (1/2 TON)
L/1 ASTRO, SAFARI VAN 4x4 (1/2 TON)
L/1 EQUINOX LS 4x2 (WMI-2CN)
L/2 EQUINOX LS 4x4 (WMI-2CN)
L/6 EQUINOX LT 4x2 (WMI-2CN)
L/7 EQUINOX LT 4x4 (WMI-2CN)
S/1 COLORADO, SSR, BLAZER, TRAILBLAZER, TRAILBLAZER (1/2 TON), CANYON, ENVOY, ENVOY XL, ENVOY XUV 4X2 (1/2 TON), SONOMA
T/1 COLORADO, SSR, BLAZER, TRAILBLAZER, TRAILBLAZER (1/2 TON), SONOMA, CANYON Z85 SLE, JIMMY, ENVOY SLE, ENVOY XL SLE, ENVOY XUV SLE 4X4 (1/2 TON)
U/0 CHEV-UPLANDER APV 4x2 (1/2 TON) BASE
U/2 CHEV-UPLANDER LS APV 4x2 (1/2 TON)
U/3 CHEV-UPLANDER LT APV 4x2 (1/2 TON)
V/0 CHEV-VENTURE/UPLANDER EXT APV 4x2 (1/2 TON) BASE
V/1 CHEV-VENTURE/UPLANDER EXT CARGO APV (1/2 TON)
V/2 CHEV-VENTURE/UPLANDER EXT LS APV (1/2 TON)
V/3 CHEV-VENTURE/UPLANDER EXT LT APV (1/2 TON)
X/3 UPLANDER AWD LT APV (1/2 TON)
BUICK
A/0 RENDEZVOUS SRV 4x2
B/0 RENDEZVOUS SRV 4x4
B/9 INCOMPLETE
S/1 RAINIER 4x2

T/1 RAINIER 4x4
V/1 TERRAZA EXT MOBILITY INCOMPLETE (1/2 TON)
V/2 TERRAZA EXT EWB-CX (1/2 TON)
V/3 TERRAZA EXT CXL (1/2 TON)
X/2 TERRAZA AWD EXT CX (1/2 TON)
X/3 TERRAZA AWD EXT CXL (1/2 TON)
CADILLAC
H/0 INCOMPLETE (HEARSE)
H/9 INCOMPLETE (LIMOUSINE)
C/6 ESCALADE, 4x2 1500 (1/2 TON) LUXURY
E/6 SRX
K/6 ESCALADE, ESCALADE ESV, ESCALADE EXT 4x4 1500 (1/2 TON) LUXURY
PONTIAC
A/0 AZTEK SRV 4x2
B/0 AZTEK SRV 4x4
U/0 MONTANA SV6 RWB 4x2 (1/2 TON) BASE
U/2 MONTANA SV6 RWB 4x2 (1/2 TON)
U/3 MONTANA SV6 RWB 4x2 (1/2 TON)
V/0 MONTANA SV6 EXT 4x2 (1/2 TON) BASE
V/1 MONTANA SV6 EXT MOBILITY INCOMPLETE (1/2 TON)
V/2 MONTANA SV6 EXT (1/2 TON)
V/3 MONTANA SV6 EXT (1/2 TON) DOMESTIC
V/3 MONTANA SV6 EXT
X/2 MONTANA SV6 AWD (1/2 TON)
X/3 MONTANA SV6 AWD
X/3 MONTANA SV6 AWD (1/2 TON) DOMESTIC
SATURN
V/0 RELAY EXT & RF2 4/2 (1/2 TON)
V/1 RELAY EXT MOBILITY INCOMPLETE (1/2 TON)
V/2 RELAY EXT & RF3 (1/2 TON)
X/2 RELAY AWD & RF3 (1/2 TON)
Z/2 VUE FWD MANUAL
Z/3 VUE FWD AUTO
Z/4 VUE AWD 4 CYL.
Z/5 VUE FWD 6 CYL.
Z/6 VUE AWD 6 CYL.
HUMMER
N/2 FULL SIZE 4x4 SUV/SUT, (3/4 TON) H2
ISUZU
S/1 ASCENDER 4x2 (1/2 TON)
T/1 ASCENDER 4x4 (1/2 TON)
SAAB
T/1 SAAB, 9-7, SUV

* LINE/CHASSIS DESCRIPTION INCLUDES ALL FULL SIZE CHEVROLET AND GMC TRUCK MODELS

7 BODY TYPE

0 – COMMERCIAL CHASSIS
(CHEVROLET/BUICK/CADILLAC)
1 – COMMERCIAL SPECIAL AND RV CUTAWAY
(INCLUDES CHEVROLET EXPRESS COMMERCIAL,
GMC SAVANA CARGO SPECIAL AND CAMPER SPECIAL)
2 – SPORT UTILITY TRUCK
(AVALANCHE, ESCALADE EXT, ENVOY XUV, H2 SUT)
3 – FOUR-DOOR CAB/UTILITY
(INCLUDES, TRAILBLAZER, RAINIER,
JIMMY, ENVOY, ENVOY XL, EQUINOX
FULL SIZE – YUKON, TAHOE, DENALI
ESCALADE, H2 AND CREW CAB)
3 – FOUR-DOOR ALL PURPOSE VEHICLE
(MONTANA, VENTURE, UPLANDER, TERRAZA, RELAY),
AZTEK, RENDEZVOUS (SRV), SATURN SUV, SRX
4. – TWO-DOOR CAB
(COLORADO, SSR, CANYON, SIERRA, SILVERADO)
5 – VAN
(EXPRESS, SAVANA, ASTRO, SAFARI)
6 – SUBURBAN, YUKON XL, ENVOY XL, DENALI XL,
TRAILBLAZER EXT, ASCENDER, ESCALADE ESV
7 – MOTOR HOME CHASSIS
8 – TWO-DOOR UTILITY
(BLAZER, JIMMY)
9 – EXTENDED CAB/EXTENDED VAN
(COLORADO, CANYON, SIERRA, SILVERADO,
ASTRO, SAFARI, EXPRESS AND SAVANA)

8 ENGINE TYPE

CODE	ENG. OPT.	DISP.	CYL.	FUEL SYSTEM**
A	LH2	4.6L	V8	SFI
B	L33	5.3L	V8	SFI
C	L34	2.0L	L4	MFI
D	L61	2.2L	L4	MFI
E	LA1	3.4L	V6	MFI
F	LNJ	3.4L	V6	SFI
G	L18	8.1L	V8	MFI
H	LS2	6.0L	V8	SFI
J	LB8	2.5L	V6	SFI
K	LE6	2.4L	L4	MFI
L	LX9	3.5L	V6	SFI
M	LH6	5.3L	V8	SFI
N	LQ9	6.0L	V8	MFI
R	L31	5.7L	V8	CPI
S	LL8	4.2L	L6	MFI
T	LM7	5.3L	V8	MFI
U	LQ4	6.0L	V8	MFI
V	LR4	4.8L	V8	MFI
W	L35	4.3L	V6	CPI
X	LU3	4.3L	V6	MFI
Y*	LD8	4.6L	V8	MFI
Z	L59	5.3L	V8	MFI
1	LB7	6.6T	V8	DSL
2	LLY	6.6T	V8	DSL
3	LW9	3.0L	V6	SFI
4	L66	3.5L	V6	MFI
6	L52	3.5L	L5	MFI
7	LY7	3.6L	V6	SFI
8	LK5	2.8L	L4	MFI
9*	L37	4.6L	V8	MFI

* USED ONLY IN BUICK, CHEVROLET & CADILLAC PASSENGER CAR – DERIVED INCOMPLETE VEHICLES

** DSL = DIESEL, MFI = MULTIPOINT FUEL INJECTION. CPI = CENTRAL PORT INJECTION, T = TURBO SFI = SEQUENTIAL FUEL INJECTION



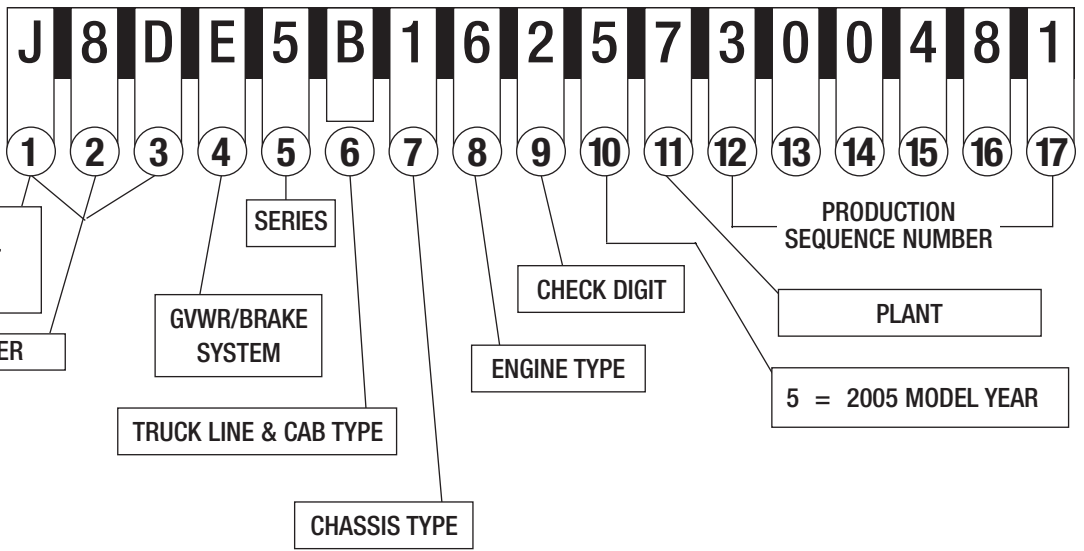
2005 MEDIUM DUTY TRUCK AND INCOMPLETE VEHICLE VIN SYSTEM

TYPICAL VIN

POSITION NO.

1, 4 = U.S. BUILT
2 = CANADIAN BUILT
J = JAPAN BUILT

WORLD MAKE IDENTIFIER



1-3 WORLD MAKE IDENTIFIER

-CHEVROLET

1GC 2GC
1GB* 2GB*
4KB* J8B*

-ISUZU

4GT* 4KL JAL
* Incomplete Vehicle

-GMC

1GT 2GT
1GD* 2GD*
4KD* J8D*

5 SERIES

- 4 - 4500 SERIES (C4/W4)
- 5 - 5500 SERIES (C5/W5)
- 6 - 6500 SERIES (C6/T6F)
- 7 - 7500 SERIES (B7/C7/D7/T7F/W7)
- 8 - 8500 SERIES (C8/T8F)

6 TRUCK LINE & CAB TYPE (MODEL)

- A - FORWARD/TILTMETER MEDIUM, TILT, 72.0 BBC (W5)
- B - FORWARD/TILTMETER MEDIUM, TILT, 67.0 BBC (W4)
- E - C SERIES, CREW CAB (C4E - C8E)
- C - C SERIES, CONVENTIONAL CAB (C4C - C8C)
- V - C SERIES, CUTAWAY COMMERCIAL CAB (C4V - C8V)
- U - C SERIES, CUTAWAY MOTORHOME (C4U/C5U)
- J - W SERIES NPR/NPQ NON-TILT CAB, 108.0 BBC (W4/W5)
- F - T SERIES TILT CAB, 86.0 BBC (T6F - T8F)

BBC = BUMPER TO BACK OF CAB

4 GVWR/BRAKE SYSTEM

CODE	GVWR RANGE (IN POUNDS)	BRAKE SYST.
A	9001 - 10,000	HYD
B	10,001 - 14,000	HYD
C	14,001 - 16,000	HYD
D	14,001 - 16,000	AIR
E	16,001 - 19,500	HYD
F	16,001 - 19,500	AIR
G	19,501 - 23,500	HYD
H	19,501 - 23,500	AIR
J	23,501 - 26,000	HYD
K	23,501 - 26,000	AIR
L	26,001 - 33,000	HYD
M	26,001 - 33,000	AIR
N	33,001 - 40,500	HYD
P	33,001 - 40,500	AIR
R	40,501 - 48,500	HYD
S	40,501 - 48,500	AIR
T	48,501 - 58,000	AIR
V	58,001 - 69,500	AIR
X	GLIDER KIT	—

7 CHASSIS TYPE

- 0 - GLIDER KIT
- 1 - 4 X 2 (2 AXLES - 1 DRIVING)
- 3 - 4 X 4 (2 AXLES - 2 DRIVING)
- 4 - 6 X 4 (3 AXLES - 2 DRIVING)

8 ENGINE TYPE

- C - CAT 7.2L L6 TURBO ELECTRONIC (LG5)
- E - GM 8.1L V8 MFI GASOLINE (L18)
- X - GLIDER KIT LESS ENGINE
- U - 6.0L V8 GAS, (LQ4)
- 2 - 6.6L V8 DI TURBO DIESEL (LLY)
- 3 - ISUZU 7.8L L6 DI TURBO DIESEL, I/C (LG4)
- 4* - ISUZU 4.75L L4 4HE1-XS I/C TURBO DIESEL (1C3)
- 5* - ISUZU 4.75L L4 4HE1-XN I/C TURBO DIESEL (1C2)
- 6 - ISUZU 5.2L L4 I/C TURBO DIESEL (1C5)

* - CODES 4 AND 5 APPLY TO 1999-2004 VEHICLES

11 PLANT

B - BALTIMORE	MD	L - LANSING	MI	1 - WENTZVILLE	MO
B - LANSING	MI	M - TOLUCA	MEXICO	2 - MORAINÉ	OH
D - DORAVILLE	GA	R - ARLINGTON	TX	3 - KAWASAKI	JAPAN
E - PONTIAC	MI	S - RAMOS ARIZPE	MEXICO	6 - INGERSOLL	ON
F - FLINT	MI	S - SPRINGHILL	TN	6 - OKLAHOMA CITY	OK
G - SILAO	MEXICO	T - SHREVEPORT	LA	7 - FUJISAWA	JAPAN
H - MISHAWAKA	IN	Z - FORT WAYNE	IN	8 - SHREVEPORT	LA
J - JANESVILLE	WI	0 - LANSING	MI	8 - TILLSONBURG	ON
K - LINDEN	NJ	1 - OSHAWA	ON	(IPC)	

The information shown is correct at time of printing, but may be changed during model year.

To obtain additional copies, please fax request to 586-492-0292

General Motors Corporation, Service Operations, 30501 Van Dyke, Warren, MI 48090
Litho in U.S.A. 9/04

©2004 General Motors Corporation. All Rights Reserved.